

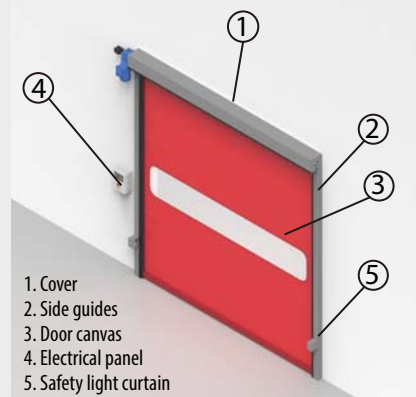
Motorised high-speed rolling door with a metallic structure for installation in indoor areas.

### TECHNICAL DESCRIPTION

**Inkema's PR10 Rolling High-speed Door** is composed by a PVC canvas with internal reinforcements, attached to a **metallic frame** which incorporates a motor-reducer driven by a control panel.

It has been designed for use in warehouses, logistics centres, premises and any type of production plant which processes a lot of goods.

This fast-acting door is designed especially for heavy duty indoor applications. It facilitates a fluid traffic thanks to its high speed of opening and closing. As a result, it also **saves energy and improves efficiency**.



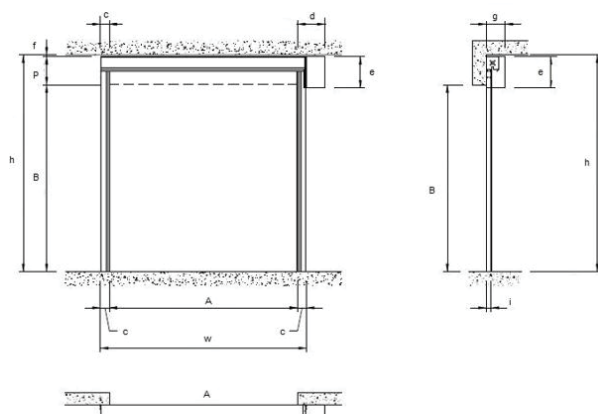
- ✓ **EXCELLENT TIGHTNESS:**  
It blocks wind currents with the double brush on the frame structure.
- ✓ **DOOR FOR MULTIFUNCTIONAL USE:**  
Suitable for installations in any industrial sector: logistics, automobile, agricultural foodstuff, pharmaceuticals...
- ✓ **MAXIMUM SAFETY ABOVE ALL:**  
The PR10 includes a safety light curtain with a polarised filter as standard.
- ✓ **FAST ASSEMBLY AND EASY REPAIR:**  
The door comes pre-installed. Low maintenance.



### TECHNICAL DATA

- Application: Indoor
- Structure: Metallic frame
- Max. size: 4000 x 4000 mm.
- Colours (canvas-frame) 10 colours available (white, cream, yellow, orange, red, light blue, dark blue, green, grey and black).
- Material-canvas: High strength PVC (900g/m2)
- Max. Speed: Opening: (~1,0m/s)  
Closing: (~1,0m/s)
- Safety: Light curtain (standard)  
Soft, flexible lower edge
- Compliance: EN13241-1

### DIMENSIONS



	A	B	P	c	d	e	f	g	h	i	w
Min. (mm)	820	2000	450	115	455	527	30	328	2580	80	1050
Max. (mm)	4000	4000							4480		4230

(\*)Valid dimensions for doors with right side engine 10PR10/11ABLDA

### COMPOSITION

This **high-speed rolling door** consists of the following elements:

- **CANVAS:** Made with flexible polyester inner mesh of great resistance and covered with PVC in 0.8 mm thickness. Transversal reinforcements are placed to provided greater rigidity. PVC. Reinforcements are inserted across the canvas to provide greater rigidity.
- **FRAME:** Composed by two laterals and head, all made in 2mm folded sheet.
- **HEAD:** It contains the pivot shaft designed to withstand friction.
- **GEAR MOTOR:** Three-phase 400V motor asynchronous.
- **ELECTRICAL PANEL:** Consists of safety components, power and electrical board.





## OPERATION

The motorisation of this door consists of an efficient high-quality **three-phase asynchronous motor**. It also includes a worm gear reducer delivering maximum reliability. The motor brake allows the immediate stopping of the drum when it receives orders for either stop or inversion, or in the event of a sudden power failure.

In the event of power supply failure, the engine can be disengaged, and the handle can be used to open/close the door manually.

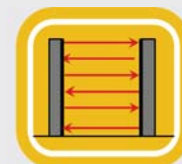
The door's **control panel** is composed by protection and manoeuvre elements delivering an easy and safe operation.



## SAFETY SYSTEMS

The **PR10 high-speed door** has a **light curtain of safety sensor** as standard. Sensor are installed next to the lateral guides of the door, to order its instantaneous opening if they detect any obstacle during the manoeuvre. This light curtain also uses cross beams, in order to ensure maximum protection.

The **light curtain** has a safety certificate in accordance with regulations: EN ISO 13849-1:2008 Cat.2 PL D; EN 61508:2010 SIL 2; EN 12978:2009 (SB type, exl. IEC 61496-2:2006).



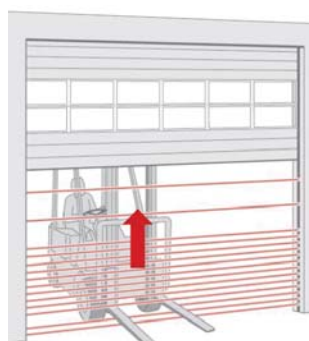
Light curtain  
(standard)



10 available colours



Light Curtain



Anti-collision safety system



Control panel

## SERVICES

In addition to the standard technical specifications of the high-speed doors, other options are also available\*:

Features	Standard	Optional
Light curtain	●	
Frequency shifter		○
Uninterruptible Power Supply (UPS)		○
Extra safety photocell		○
Extra opening options		○
Motor cover		○
Front motor		○
A row of small windows	●	
Second row of small windows		○
Additional push button panel		○
Middle stop		○

Standard feature ●  
Optional feature ○

## COLOUR RANGE

The colours available for the canvas are: white, cream, yellow, orange, red, light blue, dark blue, green, grey and black.

### CANVAS:



The **Rolling High-speed Door (PR10)** has been designed and manufactured in accordance with the following European directives and standards:

**UNE -EN 12453 and UNE-EN 13241**

\*For other options, consult Customer Service.

**www.inkema.com**